

PUNTO EVO *flexo*
WALL AXIAL FANS



www.vortice.com

When Italian Design
meets Technology



NEW



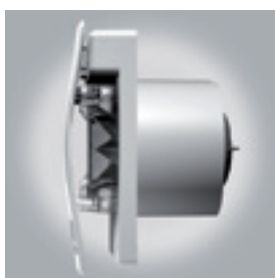
Key features

- **Extremely quiet**
26.9 Lp dB(A) for models Ø100
32.3 Lp dB(A) for models Ø120
- **IP 45**
High protection against jets of water suitable for installation in wet areas, such as bathrooms (even Zone 1), kitchens, laundries and basements.
- **Low power consumption**
9 W for models Ø100
13 W for models Ø120
- **High performance**
90 m³/h for models Ø100
175 m³/h for models Ø120
- **Reduced depth**
61,5 mm for models Ø100
71 mm for models Ø120
- **Compact size**
173 mm for models Ø100
193 mm for models Ø120
- **Unique design**
 - **LONG LIFE 30.000 h**





Product Specifications



- Front panel, motor holder and integrated backdraught shutter made of ABS thermoplastic shockproof and anti-UV resin.
- Helico-centrifugal mixed-flow impellers made of PP resin.
- Impellers and motor holder specifically designed for high performance, low power consumption and low noise emissions.
- Integrated butterfly backdraught shutter designed to prevent unwanted air inflows when the appliance is switched off.
- Long-life ball-bearing motors guaranteed for 30,000 hours continuous trouble-free operation.
- Designed to provide a low environmental impact, using recyclable materials and following the new "Design for Disassembly" technique to achieve easy and environmentally friendly disposal of components.
- Protection rating: IP45.
- Insulation class: II.

Installation

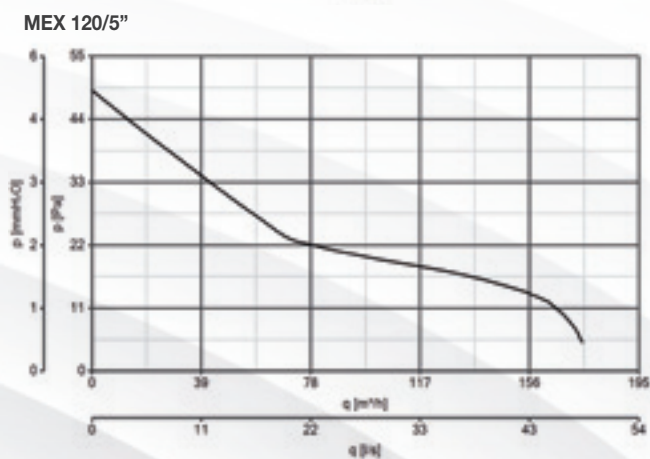
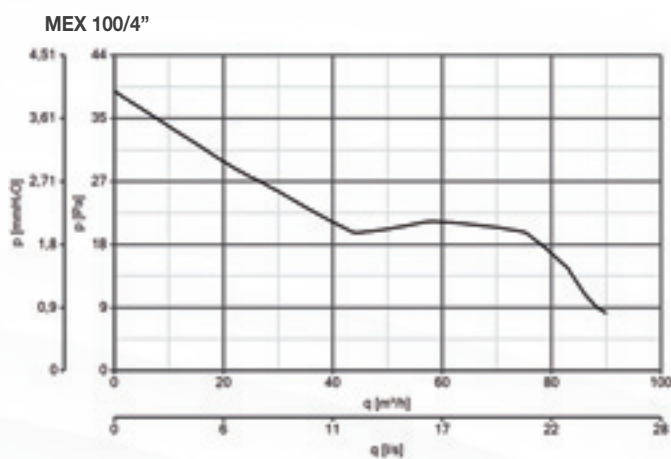


- Designed for direct air extraction outside or through short ducts.
- Typical wall/panel, false wall, ceiling and false ceiling installations.
- The reduced mounting depth makes it ideal to fit even when the installation space is limited due to the proximity of elbow bends (90°).

Technical Specifications

Models	Code	V ~ 50 Hz	W max	A max	RPM max	Max Airflow		Max Pressure		Lp dB(A) 3m
						m³/h	l/s	mmH ₂ O	Pa	
MEX 100/4" LL 1S	11313	230	9	0.052	2175	90	25	4	39,23	26.9
MEX 100/4" LL 1S T	11314									
MEX 120/5" LL 1S	11333		13	0.095	2075	175	48.6	5	49.04	32.3
MEX 120/5" LL 1S T	11334									

Performance curves



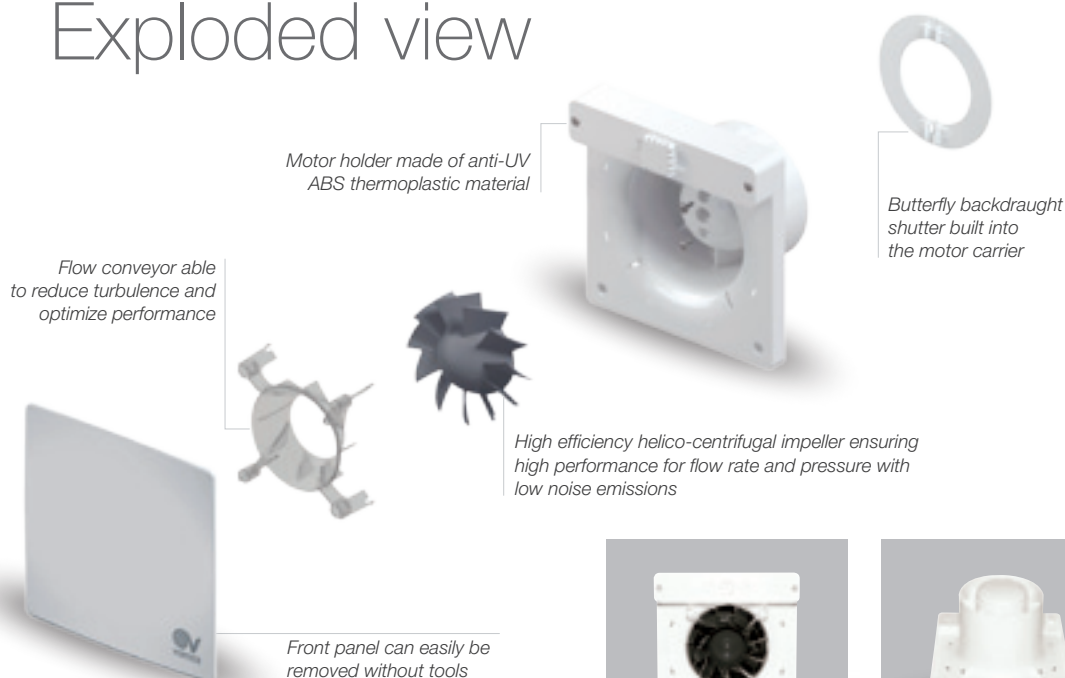


RESIDENTIAL VENTILATION

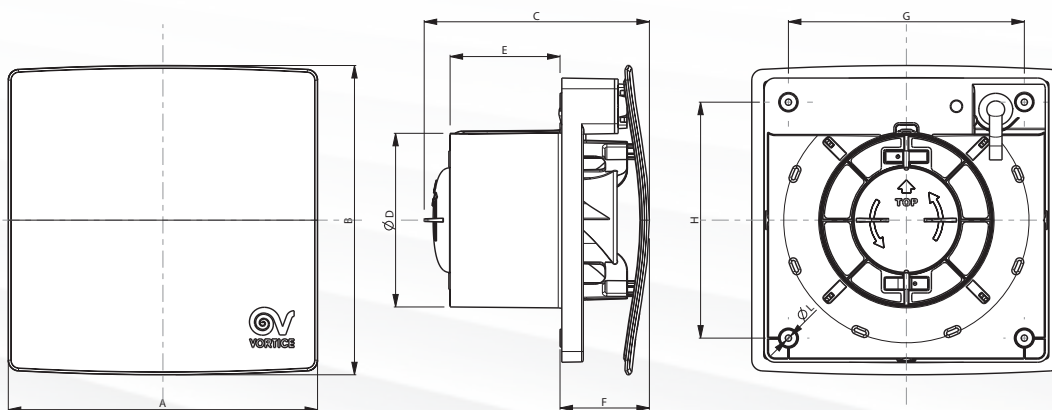
PUNTO EVO *flexo*

WALL AXIAL FANS

Exploded view



Dimensions



Models	A	B	C	Ø D	E	F	G	H	Ø L	Kg
MEX 100/4" LL 1S	173	173	126	98	61.5	50	132	132	3.5	0.60
MEX 100/4" LL 1S T										
MEX 120/5" LL 1S	193	193	138	119	71	53	152	152	3.5	0.77
MEX 120/5" LL 1S T										

Dimensions (mm)